

FracRight System Accessories

Frac String Accessories

TAQA's FracRight System Accessories are run as part of the Frac String to aid the setting of FracRight components and enable fluid circulation whilst running in hole.



FracRight Ball Catcher Sub Sleeve

TAQA's Ball Catcher Sub is run as part of the frac string just above the Guide Shoe. The setting ball, once circulated to depth, provides a means of setting the FracRight DHP Packer or opening the FracRight Diff Sleeve.

Features

- Available in different metallurgies to suit customer requirements
- Available with different connections to suit customer requirements

FracRight Ported Guide Shoe

TAQA's Ported Guide Shoe, available in a range of sizes, allows the string to self fill while running the liner string down hole. The rounded design assists guiding the liner through the uneven open hole profile while maintaining strength and

Benefits

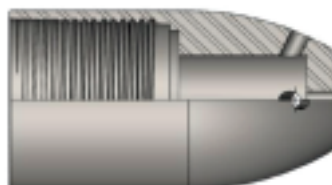
- Can be run with the full FracRight completion portfolio
- Able to withstand high temperatures

FracRight Check-Valve Guide Shoe

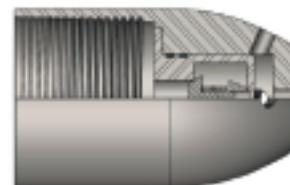
TAQA's Check-Valve Guide Shoe is designed specifically for circulation of fluids whilst running in hole. The intergrated spring loaded check valve allows fluid circulation from the tubing to annulus without U-tubing returns. The Shoe is able to withstand high temperatures and large volumes of fluid.



FracRight Ball Catcher Sub Sleeve



FracRight Ported Guide Shoe



FracRight Check-Valve Guide Shoe