

Filtrex Conformable Sand Control Solution is a unique technology designed to transit tight restrictions within the upper completion then expand and conform to larger casing/screen IDs where sand control is required. Filtrex has the flexibility to be conveyed rigidly on Coiled tubing/Pipe, E-line or Slickline.

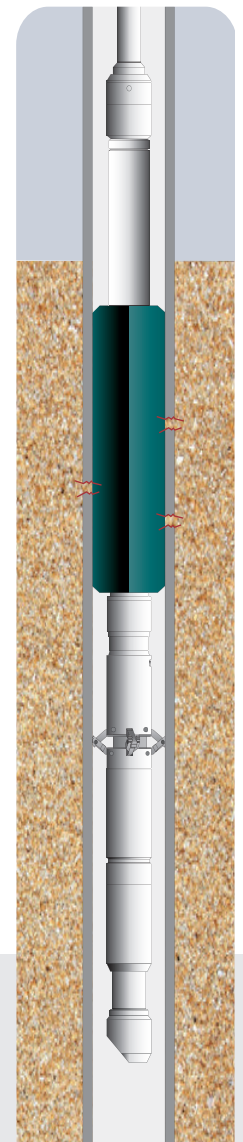
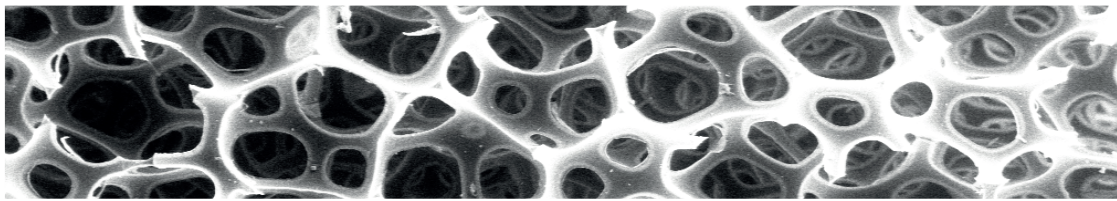
The key to the technology is the use of innovative open cell matrix polymer (OCMP) for sand retention; enabling the tool to be fully compressed during deployment and when at depth, allowed to expand to fill the annular gap. The tortuous flow path and polymeric nature of the OCMP baffles the energy from sand grain impingement, resulting in an erosion resistant filtration system. Filling the annular gap prevents further sand ingress and holds the sand in place.

## SPECIFICATIONS

<b>TOOL OD</b>	2.690"	3.600"	3.620"	3.940"	4.400"	5.650"
<b>MIN RESTRICTION TOOL PASSES THROUGH</b>	2.750"	3.810"	3.810"	4.125"	4.560"	5.750"
<b>MIN ID OF TOOL *</b>	1.508"	2.300"	2.300"	2.300"	2.441"	2.441"
<b>CASING/LINER SETTING RANGE</b>	3.500"	4.500"	4.500"	5.500"	7.000"	7.000"
	9.2#	12.6#	12.6#	15.5#	23-29#	23-29#
<b>TEMPERATURE °C/°F **</b>	95/203	95/203	95/203	95/203	95/203	95/203

\*Excluding anchoring device

\*\*Higher temperatures are evaluated on a case by case basis



## FEATURES AND BENEFITS

- **COMPRESSIBLE** - can be deployed through tight restrictions then conform to large ID Polymeric-erosion and chemical resistant filter
- **DEGRADABLE** compression sleeve - enables coverage of long sections
- **FLEXIBLE** - can be designed for most completion architectures.